

Creating Outsized Impact for More Than a Century

Firmly established at the Gateway to the West, Olin has produced some of the sharpest minds in business. We create positive impact for our students, business, and society at large through education, research, and the culture we cultivate.



50+

Olin alumni are CEOs in the St. Louis area



Top 10

Business school for producing C-suite executives



30%

Of Executive MBAs are in health-related fields



WashU Olin empowers academics, executives, innovators, and investors to drive health impact. The programs we offer prepare graduates to deliver value and contribute to their organizations from day one.

Olin's **FULL-TIME DEGREE PROGRAMS** prepare early-career professionals to understand the intersection of business and health, allowing our graduates to contribute meaningfully to the organization's mission and goals. Our programs with a health emphasis include a Business of Health specialization in our full-time MBA program, a healthcare concentration in our MS in Business Analytics program, and joint degrees from WashU's Schools of Medicine and Public Health.

olin.washu.edu/mba
olin.washu.edu/smp

Olin offers two **PART-TIME MBA PROGRAMS** for individuals in health fields who want to continue working during their studies. The Flex MBA is designed for mid-career professionals who want to advance their careers, while our Executive MBA program is targeted to senior executives who want to take on new responsibilities and elevated leadership roles. Both offer focused courses and immersive experiences related to health curriculum.

olin.washu.edu/EMBA
olin.washu.edu/FlexMBA

Olin's **EXECUTIVE EDUCATION** empowers organizations with tools to scale impact in leadership, strategy, and data-driven decision making tailored to health. Programs blend faculty expertise with real-world cases, turning complex challenges into actionable growth plans. Options are available for both individual skill development and customized group learning opportunities.

olin.washu.edu/execed

Driving Health Impact

As a top-tier university and a dedicated member of the St. Louis community, Olin is making an impact in health-related areas. By combining Olin's proven strength in preparing principled leaders with the expertise of WashU's Schools of Medicine and Public Health, the Business of Health initiative is inherently interdisciplinary in its coursework, collaborations, and impact.

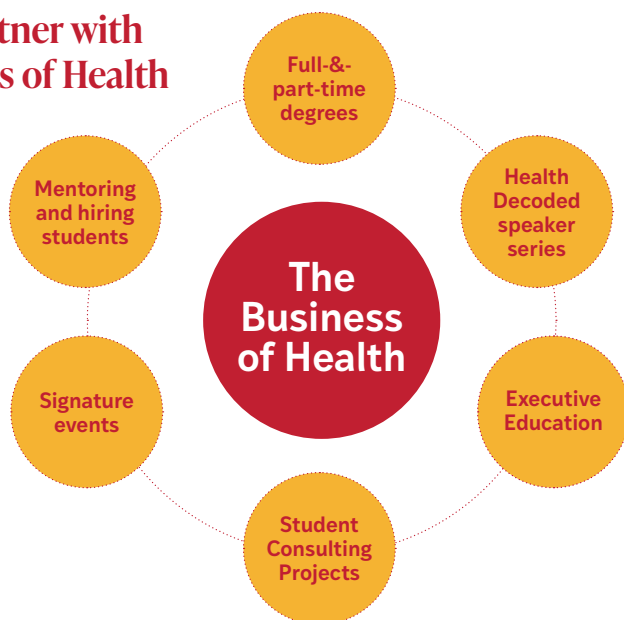
Alumni are combining their medical training with business savvy to find innovative solutions to problems. Faculty members are collaborating with other WashU schools to research subjects that help people live better lives. Students are individualizing their Olin learning experience to create the next chapter in the Business of Health.

“We’re bringing core business skills to fuel the steady growth of ideas and innovation, so that we can build better outcomes for patents, improve care delivery systems, and deliver revolutionary breakthroughs to the market.”

Dean **Mike Mazzeo**



Ways to Partner with the Business of Health



Sign up to be a part of the conversation and the Business of Health

